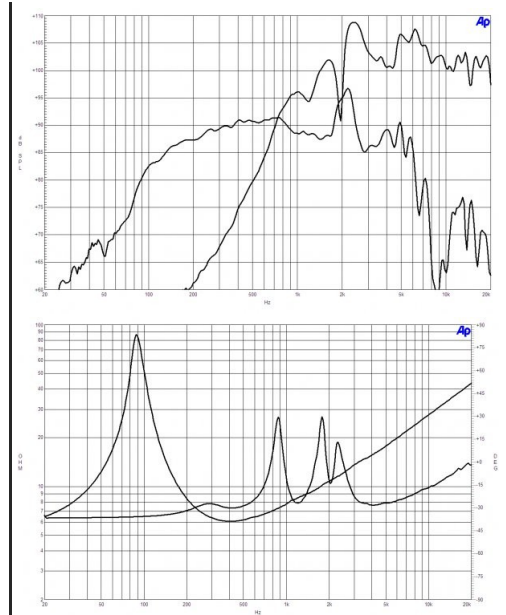




# 6HCX51

## Coaxials - 6.5 Inches

300 W continuous program power capacity  
70° nominal coverage  
90 - 18000 Hz response  
92 dB sensitivity  
Single Neodymium magnet assembly  
20.1 mm (0.79") HF unit exit diameter



### Specifications

Nominal diameter	170 mm (6.5 in)
Nominal impedance	8 $\Omega$
Minimum impedance lf	6.0 $\Omega$
Minimum impedance hf	7.5 $\Omega$
Frequency range	90 - 18000 Hz
Dispersion angle <sup>1</sup>	70 °
Magnet material	Neodymium Ring

### Specifications LF Unit

LF Sensitivity <sup>2</sup>	92.0 dB
LF Nominal Power Handling <sup>3</sup>	150 W
LF Continuous Power Handling <sup>4</sup>	300 W
LF Voice Coil Diameter	51 mm (2.0 in)
LF Winding Material	Copper

### Specifications HF Unit

HF Sensitivity <sup>5</sup>	105.0 dB
HF Nominal Power Handling <sup>6</sup>	25 W
HF Continuous Power Handling <sup>7</sup>	50 W
HF Voice Coil Diameter	36 mm (1.4 in)

### Specifications HF Unit

HF Winding Material	Aluminium
Diaphragm material	Polyester
Recommended crossover <sup>8</sup>	2.2 kHz

### Parameters

Fs	89 Hz
Re	5.2 $\Omega$
Qes	0.4
Qms	7.5
Qts	0.38
Vas	5.0 dm <sup>3</sup> (0.18 ft <sup>3</sup> )
Sd	132.0 cm <sup>2</sup> (20.5 in <sup>2</sup> )
$\eta_0$	0.8 %
Xmax	5.0 mm
Xvar	5.5 mm
Mms	16 g
Bl	10.9 Txm
Le	0.8 mH
EBP	222 Hz

### Mounting And Shipping Info

Overall diameter	187 mm (7.4 in)
Bolt circle diameter	172 mm (6.7 in)
Baffle cutout diameter	146 mm (5.75 in)
Depth	104 mm (4.1 in)
Flange and gasket thickness	11 mm (0.4 in)
Net weight	1.55 kg (3.4 lb)
Shipping units	1
Shipping weight	1.85 kg (4.1 lb)
Shipping box	266x259x155 mm (10.5x10.2x6.1 in)

### Service Kit

Service kit lf	RCK06HCX518
Replacement diaphragm	MMD0128

1. Included by -6 dB down points.

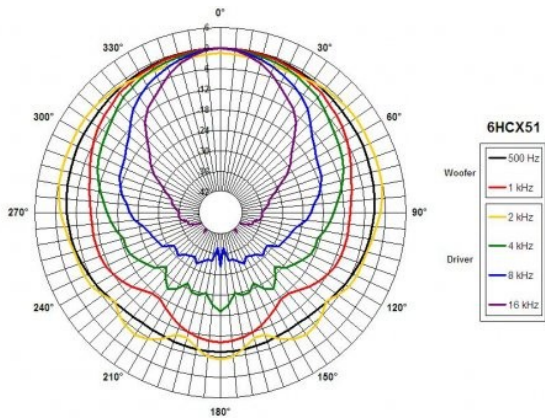
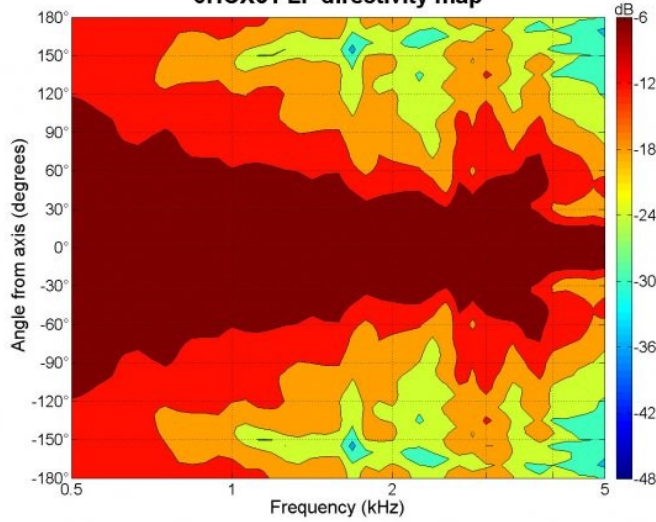
2. Applied RMS Voltage is set to 2.83V.

5. Applied RMS Voltage is set to 2.83V.

6. 2 hour test made with continuous pink noise signal (6 dB crest factor) within the range from the recommended crossover frequency to 20 kHz. Power calculated as rated minimum impedance. Exceeds 10% for 20%.

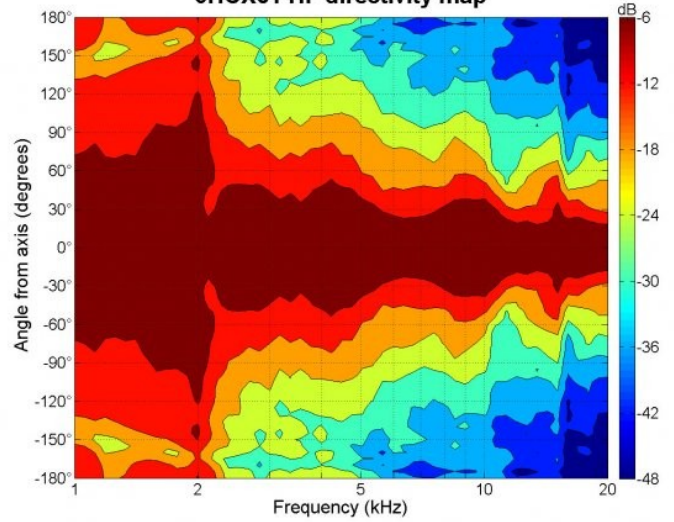
3. 2 hours test made with continuous pink noise signal (6 dB crest factor) within the range Fs-10Fs. Power calculated on rated minimum impedance. Loudspeaker in free air.
4. Power on Continuous Program is defined as 3 dB greater than the Nominal rating.

6HCX51 LF directivity map

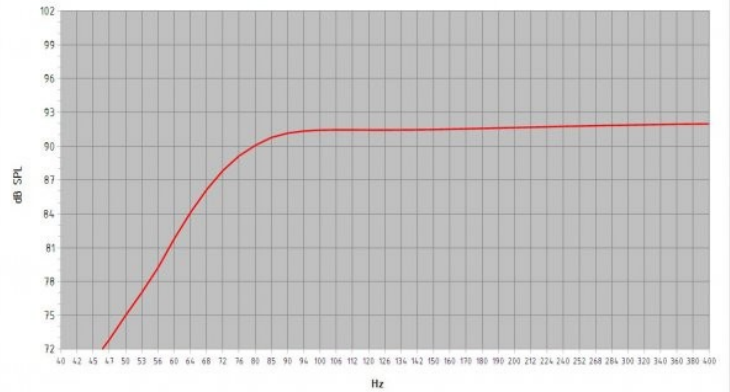


- crossover frequency to 20 kHz. Power calculated on rated minimum impedance. Loudspeaker in free air.
7. Power on Continuous Program is defined as 3 dB greater than the Nominal rating.
8. 12 dB/oct. or higher slope high-pass filter.

6HCX51 HF directivity map



Frequency Response (2,83 Vrms/1 m)



Model:	6 HCX 51			
Enclosure Type:	Bass Reflex			
Internal Net Volume (Liters):	7	Port Area (cm <sup>2</sup> ):	20.4	
Tuning Frequency (Hz):	80	Port Length (cm):	15.0	
Frequency (-3 dB) (Hz):	76.0			
Excursion Limited Maximum SPL at 1 meter (dB):	109.7	equal to	75.6	Watts (Bass Band Power Rating)
Thermal Limited Maximum SPL at 1 meter (dB):	112.7	equal to	150.0	Watts (Mid Band Power Rating)