

15CXN76

Coaxials - 15.0 Inches

800 W continuous program power capacity
80° nominal coverage
40 - 18000 Hz response
99 dB sensitivity
Single Neodymium magnet assembly
50.5 mm (2") HF unit exit diameter
Compatible with XO-4 crossover network



Specifications

| | |
|-------------------------------|------------------|
| Nominal diameter | 380 mm (15.0 in) |
| Nominal impedance | 8 Ω |
| Minimum impedance lf | 6.0 Ω |
| Minimum impedance hf | 8.0 Ω |
| Frequency range | 40 - 18000 Hz |
| Dispersion angle ¹ | 80 ° |
| Magnet material | Neodymium Ring |

Specifications LF Unit

| | |
|---|----------------|
| LF Sensitivity ² | 99.0 dB |
| LF Nominal Power Handling ³ | 400 W |
| LF Continuous Power Handling ⁴ | 800 W |
| LF Voice Coil Diameter | 76 mm (3.0 in) |
| LF Winding Material | Copper |

Specifications HF Unit

| | |
|---|----------------|
| HF Sensitivity ⁵ | 105.0 dB |
| HF Nominal Power Handling ⁶ | 80 W |
| HF Continuous Power Handling ⁷ | 160 W |
| HF Voice Coil Diameter | 75 mm (3.0 in) |

Specifications HF Unit

| | |
|------------------------------------|--------------------|
| HF Winding Material | Aluminium |
| Diaphragm material | Polyester/Titanium |
| Recommended crossover ⁸ | 1.2 kHz |

Parameters

| | |
|----------|--|
| Fs | 38 Hz |
| Re | 5.1 Ω |
| Qes | 0.3 |
| Qms | 5.8 |
| Qts | 0.28 |
| Vas | 246.0 dm ³ (8.6 ft ³) |
| Sd | 855.0 cm ² (132.5 in ²) |
| η_0 | 3.7 % |
| Xmax | 4.5 mm |
| Xvar | 6.0 mm |
| Mms | 82 g |
| Bl | 17.8 Txm |
| Le | 0.9 mH |
| EBP | 126 Hz |

Mounting And Shipping Info

| | |
|-----------------------------|------------------------------------|
| Overall diameter | 393 mm (15.5 in) |
| Bolt circle diameter | 374 mm (14.7 in) |
| Baffle cutout diameter | 354 mm (13.94 in) |
| Depth | 198 mm (7.8 in) |
| Flange and gasket thickness | 16 mm (0.62 in) |
| Net weight | 5.6 kg (12.3 lb) |
| Shipping units | 1 |
| Shipping weight | 7.0 kg (15.4 lb) |
| Shipping box | 450x450x290 mm (17.7x17.7x11.4 in) |

Crossover

| | |
|--------------------|-------------------------|
| Model | XO-4 |
| Filter Type | One way |
| Nominal Impedance | 8.0 Ω |
| Low-pass slope | 6.0 dB/oct |
| High-pass slope | 12.0 dB/oct |
| Overall Dimensions | 142x107 mm (5.6x4.2 in) |
| Weight | 0.6 kg (1.3 lb) |

Service Kit

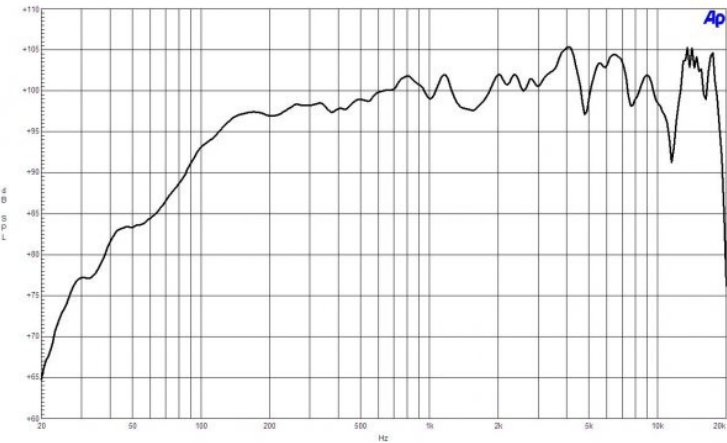
| | |
|----------------|-------------|
| Service kit lf | RCK15CXN768 |
|----------------|-------------|

Service Kit

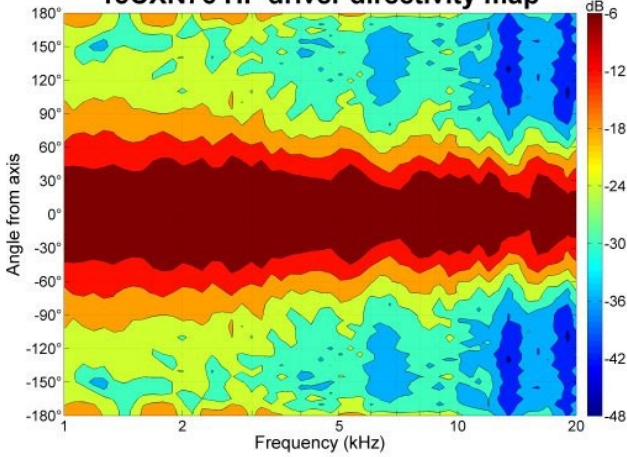
Replacement diaphragm

MMD9028M

1. Included by -6 dB down points.
2. Applied RMS Voltage is set to 2.83V.
3. 2 hours test made with continuous pink noise signal (6 dB crest factor) within the range Fs-10Fs. Power calculated on rated minimum impedance. Loudspeaker in free air.
4. Power on Continuous Program is defined as 3 dB greater than the Nominal rating.

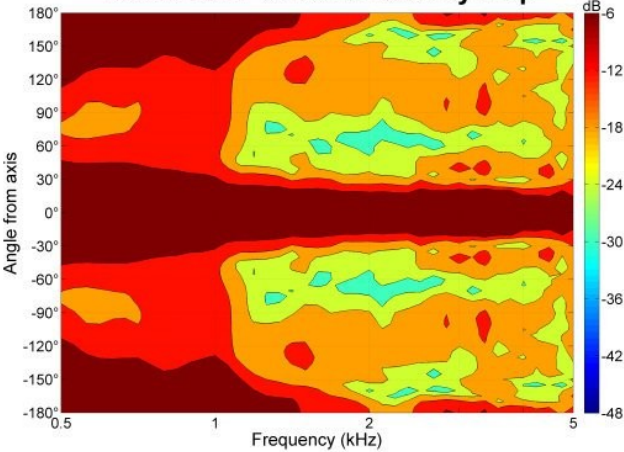


15CXN76 HF driver directivity map

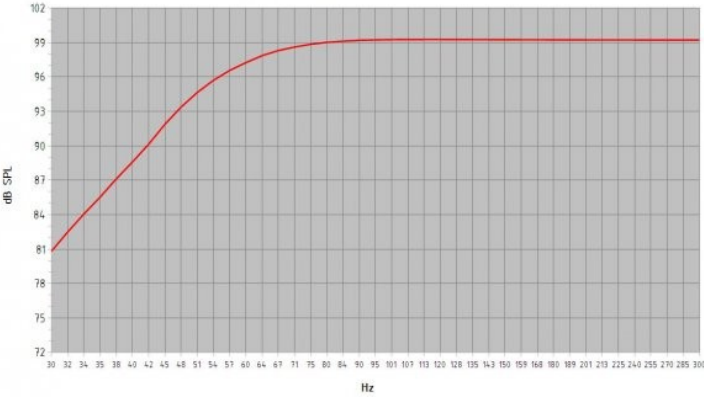


5. Applied RMS Voltage is set to 2.83V.
6. 2 hour test made with continuous pink noise signal (6 dB crest factor) within the range from the recommended crossover frequency to 20 kHz. Power calculated on rated minimum impedance. Loudspeaker in free air.
7. Power on Continuous Program is defined as 3 dB greater than the Nominal rating.
8. 12 dB/oct. or higher slope high-pass filter.

15CXN76 LF driver directivity map



Frequency Response (2.83 Vrms/1 m)



| | |
|--|---|
| Model: | 15 CXN 76 |
| Enclosure Type: | Bass Reflex |
| Internal Net Volume (Liters): | 100 |
| Tuning Frequency (Hz): | 50 |
| Frequency (-3 dB) (Hz): | 55.7 |
| Port Area (cm²): | 169.8 |
| Port Length (cm): | 7.5 |
| Excursion Limited Maximum SPL at 1 meter (dB): | 121.3 equal to 214.5 Watts (Bass Band Power Rating) |
| Thermal Limited Maximum SPL at 1 meter (dB): | 124.0 equal to 400.0 Watts (Mid Band Power Rating) |