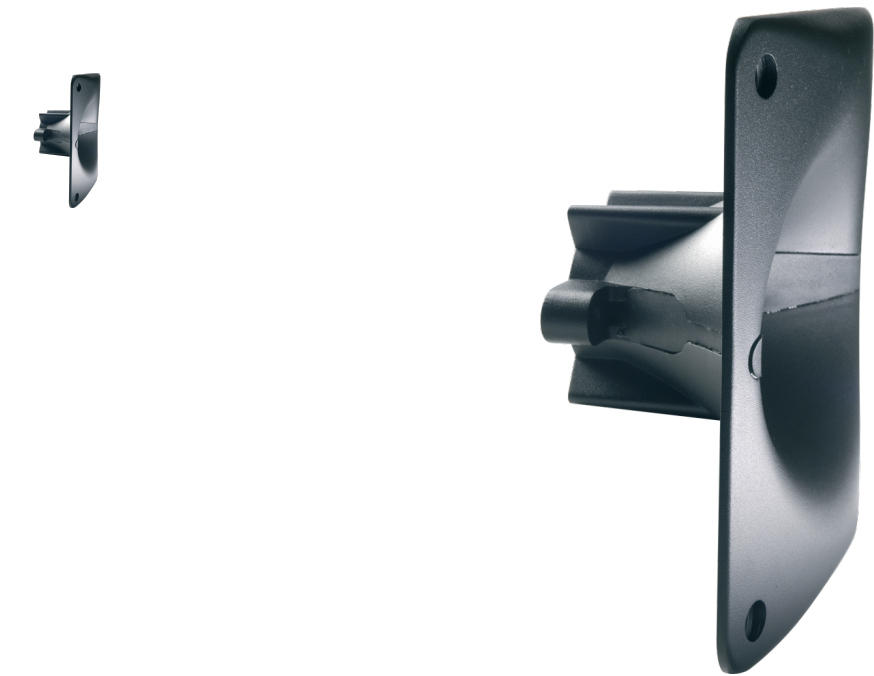
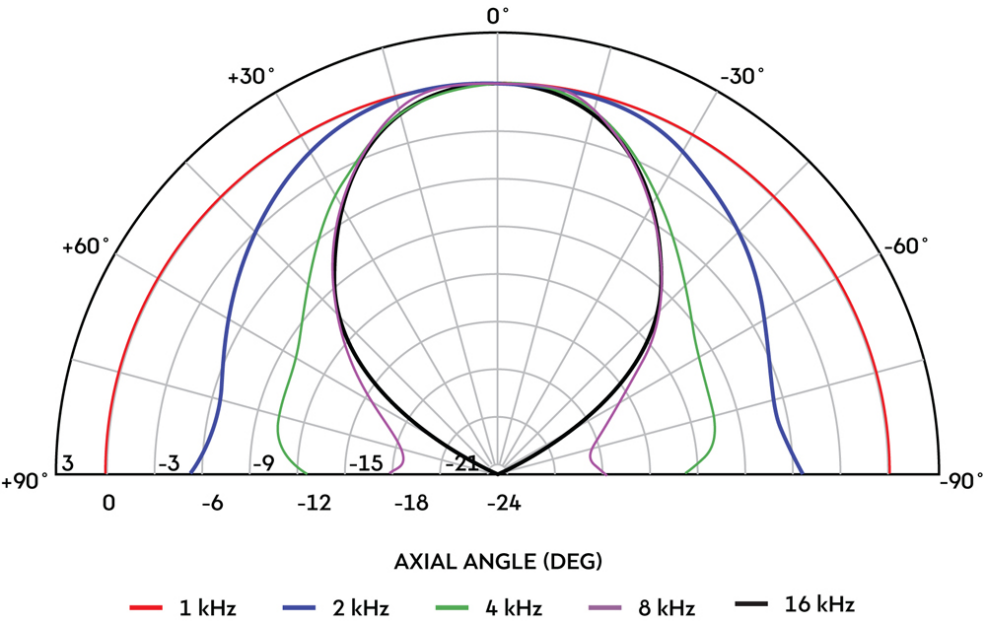


H1-7050 'No Bell'

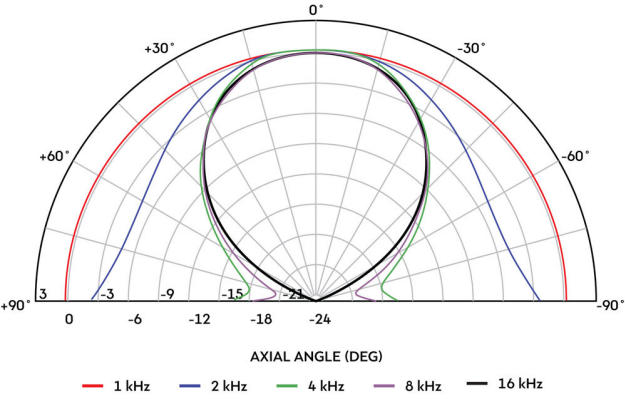


- Compatible for use with bolt (flange) fitted compression drivers
- embedded elastomer side panels that make it acoustically inert

Horizontal Polar



Vertical Polar



General Specifications

Horn type	Exponential
Horn material	Cast aluminium
Radiation pattern	70° x 50°
Cut off frequency	1.5kHz

Mounting Information

Height	180mm / 7.1in
Width	180mm / 7.1in
Depth	90mm / 3.54in
Baffle cut-out	155mm / 6.1in diameter
Fitting	Bolt (2xM6 holes on 76mm/3in P CD)
Throat exit	25.1mm / 1in
Unit weight	0.7kg / 1.5lb

Packed Dimensions & Weight

Single pack size W x D x H	190mm x 190mm x 65mm / 7.5in x 7.5in x 2.6in
----------------------------	--

Single pack weight	1.0kg / 2.2lb
Multi pack qty	24
Multi pack size W x D x H	390mm x 390mm x 560mm / 15.4in x 15.4in x 22in
Multi pack weight	18kg / 39.6lb